



# The Ashford Lakes



## The Ashford Lakes Model number: 22ANV16763IH19

**3 beds • 2 baths • 1216 sq.ft. • 16' width • 76' depth**

Our home building facilities invest in continuous product and process improvements. Plans, dimensions, features, materials, specifications and availability are subject to change without notice or obligation. Renderings and floor plans are representative likenesses of our homes and may differ from the actual homes. We invite you to tour a Home Center near you and inspect the highest value in quality housing available or call (336) 228-7844 to speak with a Home Consultant. Copyright 2017, CMH. All rights reserved.

<https://www.oakwoodhomesofburlington.com>

### OAKWOOD HOMES- BURLINGTON

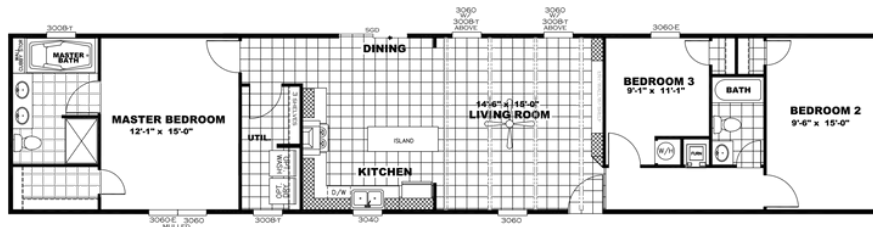
2512 N. CHURCH STREET  
BURLINGTON, NC 27217

Monday - Thursday: 9am to 6pm  
Friday: 9am to 6pm  
Saturday: 9am to 5pm  
Sunday: Closed

(336) 228-7844



# The Ashford Lakes



Model #: ANN16763I  
Drawing #:  
225157

## The Ashford Lakes Model number: 22ANV16763IH19

**3 beds • 2 baths • 1216 sq.ft. • 16' width • 76' depth**

Our home building facilities invest in continuous product and process improvements. Plans, dimensions, features, materials, specifications and availability are subject to change without notice or obligation. Renderings and floor plans are representative likenesses of our homes and may differ from the actual homes. We invite you to tour a Home Center near you and inspect the highest value in quality housing available or call (336) 228-7844 to speak with a Home Consultant. Copyright 2017, CMH. All rights reserved.

<https://www.oakwoodhomesofburlington.com>

### OAKWOOD HOMES- BURLINGTON

2512 N. CHURCH STREET  
BURLINGTON, NC 27217

Monday - Thursday: 9am to 6pm  
Friday: 9am to 6pm  
Saturday: 9am to 5pm  
Sunday: Closed

(336) 228-7844